



SOUTH COUNTY HEALTH

ANNUAL REPORT

FISCAL YEAR 2023

Balise Entrance

SOUTH COUNTY
HOSPITAL

SOUTH COUNTY HEALTH ANNUAL REPORT 2023

Dedication Statement.....	3
Message to the Community	4
About South County Health	6
Our Vision: A Model Health System	7
System At A Glance.....	8
Awards and Accreditations.....	10
Advancing Healthcare.....	11
Facility Upgrades.....	11
Key System Statistics.....	14
Procedural Firsts & Milestones	15
New SCMG Provider Spotlight.....	17
Daisy and Petal Awards.....	19
Digital.....	20
Community Healthcare.....	22
Home Health.....	22
Community Health.....	24
Testimonials.....	27
Leadership, Governance, Finance.....	28
Board of Trustees.....	28
South County Health Senior Leadership.....	30
Financials.....	32
Charitable Giving and Donor Support.....	33
Business Partners	41





DEDICATION STATEMENT

Being Rhode Island's Most Trusted Health Partner requires profound dedication on the part of our exceptional staff. With unwavering commitment, unparalleled expertise, and endless compassion, they illuminate the path towards healing and hope.

To our remarkable team, your tireless efforts transform challenges into triumphs, and uncertainty into reassurance. Your steadfast presence embodies the very essence of care, extending far beyond the walls of our institution, touching the lives of each individual and family you serve.

Amidst the ever-changing landscape of healthcare, you stand as beacons of resilience and empathy, guiding us forward with unwavering determination. Your collective spirit infuses South County Health with warmth, kindness, and a profound sense of community.

As we reflect on the past year's journey and celebrate the milestones achieved, let us pause to honor the heartbeat of our organization—the dedicated staff whose service and expertise inspire us all.

Thank you for your extraordinary dedication, for it is through your compassionate service that our community finds solace, healing, and strength.

We dedicate our annual report to our extraordinary staff who continuously embody our values of Integrity, Caring, Respect, Excellence, Partnership, and Stewardship, even during the most challenging times.



MESSAGE TO THE COMMUNITY: FIXING A BROKEN SYSTEM

On behalf of South County Health's Administration, the Board of Trustees, and the Medical Staff, we are pleased to present our Annual Report for the Fiscal Year ending September 30th, 2023. We are excited once again to present a digital annual report and share more about what makes South County Health, Rhode Island's Most Trusted Health Partner.

In the ever-changing landscape of Rhode Island healthcare, where financial viability and sustainability remain elusive, the quiet champions of nonprofit health systems stand as beacons of community service. Small nonprofit health systems wield profound influence, not merely through their provision of medical services, but through their formidable advocacy efforts. Nowhere is this more evident than right here in Rhode Island, where South County Health has emerged as a driving force behind legislation aimed at enhancing access to primary and specialty care providers for all Rhode Island residents, while leveling the competitive playing field that will allow Rhode Island to routinely recruit the breadth and caliber of medical professionals available in neighboring states.

At South County Health, we believe the Senate Healthcare Bill 2722 and House Bill 8072, serve to stabilize the entire RI healthcare delivery system,

including hospitals, primary care, specialty physicians, and advanced practice providers. The Bill also represents a critical financial step in sustaining healthcare for all Rhode Islanders, addressing the needs of our community, ensuring patients have adequate access to primary care and specialty providers, and improving health equity. By rallying together in support of this legislation, we can create positive change that benefits health systems, healthcare workers, and patients, alike.

While South County Health's primary mission remains the provision of healthcare services, as Rhode Island's Most Trusted Health Partner, there is also recognition that responsibility extends beyond the exam room. Health disparities are often rooted in systemic barriers, necessitating proactive engagement with policymakers to effect lasting change. In Rhode Island, this has propelled South County Health to the forefront of legislative discourse.



At its core, this endeavor embodies the spirit of community stewardship that defines South County Health. By championing change that prioritizes the well-being of all residents, communities serve as catalysts for positive change.

This critical legislation will help:

- Ensure adequate access for all Rhode Islanders to primary care and specialty physicians, and advanced practice providers.
- Improve the sustainability and quality of Rhode Island's hospitals.
- Improve health equity throughout Rhode Island's entire healthcare delivery system.

One key aspect of the Bills is its focus on healthcare workers. Under the proposed legislation, physicians, advanced practice providers and hospitals will have the opportunity to achieve equitable reimbursement to their peers in Connecticut and Massachusetts. This not only ensures that our healthcare professionals are fairly compensated for their essential work, but also strengthens the healthcare workforce, ultimately benefiting patient care.

We know that as a supporter of South County Health, you share an understanding of the critical nature of healthcare access. That's why we are asking you to reach out to your elected officials in support of Senate Bill 2722 and House Bill 8072. In supporting this legislation, a more equitable and sustainable healthcare environment that benefits all members of the Rhode Island community will be possible.

Send an Advocacy Letter

southcountyhealth.org/support

View Data On Rate Parity

southcountyhealth.org/support



AARON ROBINSON
President and CEO



JOSEPH F. MATTHEWS
Chairman, Board of Trustees



ROBERT BIERWIRTH, M.D.
President of the Medical Staff



ABOUT SOUTH COUNTY HEALTH



What began as a cottage hospital on Kenyon Avenue in 1919 has evolved into a technologically advanced healthcare system whose innovations and expertise has enabled South County Health to gain regional and national recognition for excellence in patient care and positive outcomes.

A leader in medical quality, service, and innovation, South County Health provides care to patients across Rhode Island in acute and outpatient settings including at Medical and Wellness Centers in Westerly, East Greenwich, and Warwick, as well as Primary Care and Specialty provider offices in Cranston, Narragansett, Newport, and Wakefield. South County Health is comprised of three healthcare entities: South County Hospital, South County Home Health, and South County Medical Group.

A 5-Star hospital for Overall Quality, South County Hospital is a global leader in robotic-assisted surgeries and is home to more robotic-assisted options than any other hospital in the state.

OUR VALUES

INTEGRITY

Honoring our commitments to those we serve.

CARING

Exceptional compassion for our patients and co-workers.

RESPECT

Building trust through mutual regard, openness, collaboration, and humility.

EXCELLENCE

Relentless pursuit of benchmark performance in everything we do.

PARTNERSHIP

Building relationships that support our values and accelerate results.

STEWARDSHIP

Managing organizational resources to preserve and sustain our mission.



OUR VISION: A MODEL HEALTH SYSTEM

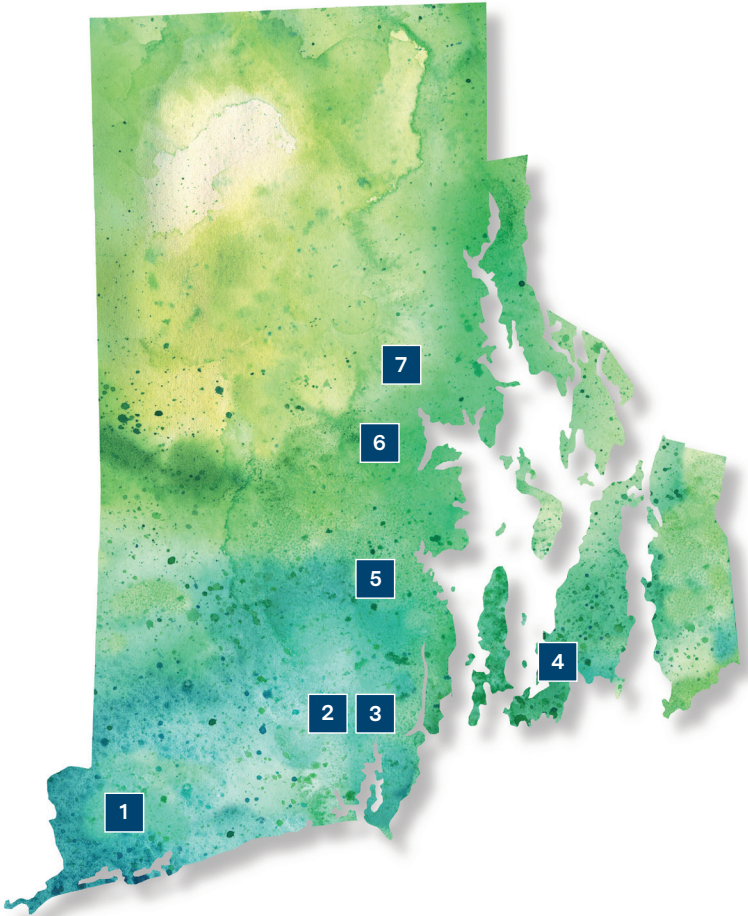


KEY STRATEGIC INITIATIVES

- HIGH PERFORMING HEALTH SYSTEM**
Achieving top 10% in quality, service, and financial performance.
- SERVICE LINE CENTERS OF EXCELLENCE**
Destination quality, service, and innovation for key clinical programs.
- TRANSFORMATION**
Deployment of contemporary, consumer-driven platforms and models of care leveraging automation, data, and analytics to enhance health outcomes.
- ACCESS**
Seamless, connected, and easy access that delights our customers.
- COMMUNITY HEALTH**
Integrate services that connect our communities to care across the continuum advancing health and value.



SYSTEM AT A GLANCE



LOCATIONS

<i>Westerly</i>	1
<i>Wakefield</i>	2
<i>Narragansett</i>	3
<i>Newport</i>	4
<i>East Greenwich</i>	5
<i>Warwick</i>	6
<i>Cranston</i>	7

SOUTH COUNTY MEDICAL GROUP

113	<i>Total Providers</i>
64	<i>Total Physicians</i>
49	<i>Total Advanced Practice Providers</i>

SOUTH COUNTY HEALTH MEDICAL STAFF

513 *Total Members of Medical Staff*

11 PRACTICES

- *Center for Women's Health*
- *Express Care*
- *General Surgery*
- *Hospitalists*
- *Infectious Disease Clinic*
- *Nephrology and Hypertension*
- *Oncology/Hematology*
- *Primary Care – Internal and Family Medicine*
- *Pulmonology and Sleep Medicine*
- *Urology*
- *Wound Care*



LOCATIONS & PRACTICES

SOUTH COUNTY HOSPITAL

p. 401-782-8000
SouthCountyHealth.org

ANCILLARY SERVICES EXPRESS CARE

LABORATORY SERVICES

Cranston, East Greenwich,
Narragansett, Wakefield,
Warwick, Westerly
p. 401-788-1418
f. 401-782-9812

DIAGNOSTIC IMAGING

East Greenwich, Wakefield,
Warwick, Westerly
p. 401-788-1486
f. 401-782-9894

PRIMARY CARE

CRANSTON

p. 401-464-6617
f. 401-464-6676

EAST GREENWICH

p. 401-471-6760
f. 401-471-6765

NARRAGANSETT

p. 401-464-6617
f. 401-464-6676

EAST GREENWICH

p. 401-562-1020

WARWICK

p. 401-562-1017

WESTERLY

p. 401-604-2500

To see wait times, Get in Line, or
start a virtual express care visit
GetCare.SouthCountyHealth.org

WARWICK

p. 401-562-1020
f. 401-562-1056

WESTERLY

p. 401-604-2530
f. 401-604-2560

NEW PATIENT / PRIMARY CARE LINE

Dedicated line for patients to schedule
appointments with South County
Medical Group providers at any of our
five primary care locations.

SPECIALTY CARE

CENTER FOR WOMEN'S HEALTH

Wakefield, Warwick,
Westerly
p. 401-789-0661

GENERAL SURGERY

Wakefield, Warwick,
Westerly
p. 401-284-1212
f. 401-788-8730

INFECTIOUS DISEASE CLINIC

Narragansett, Wakefield
p. 401-471-6285

NEPHROLOGY & HYPERTENSION

Wakefield
p. 401-782-0090
f. 401-782-0988

Westerly
p. 401-596-3313
f. 401-596-2650

CANCER CENTER

Wakefield
p. 401-783-6670
f. 401-789-4990

RADIATION THERAPY

Wakefield
p. 401-284-0850
f. 401-284-0860

PULMONARY & SLEEP MEDICINE

East Greenwich, Narragansett,
Wakefield,
Warwick, Westerly
p. 401-788-2110

SOUTH COUNTY HOME HEALTH

Wakefield, Warwick,
Westerly
p. 401-782-0500

UROLOGY

Newport, Wakefield, Warwick
p. 401-788-8780
f. 401-788-8787

WOUND CARE

Wakefield
p. 401-788-1638

PARTNERSHIP PRACTICES

CNE CARDIOLOGY

SCH partner locations:
East Greenwich, Wakefield
p. 401-921-5444

GASTROINTESTINAL MEDICINE ASSOCIATES

SCH partner locations:
East Greenwich, Westerly
p. 401-943-1301
f. 401-946-8480

ORTHO RHODE ISLAND

SCH partner locations:
Wakefield, Westerly
p. 401-777-7000
f. 401-782-6810
f. 401-738-3777 (Warwick)

THE VASCULAR EXPERTS RI

SCH partner locations:
Wakefield, Warwick
p. 401-661-8088
f. 401-661-8086



AWARDS & ACCREDITATIONS



American College of Radiation Oncology (ACRO) Accredited:

Occurring in the first year of eligibility, South County Health Radiation Therapy is one of only approximately 300 practices nationwide to receive this prestigious accreditation.

Baby-Friendly Accredited:

South County Hospital was the first hospital in RI to be designated Baby-Friendly in 2000, and has received re-designation for five-years as recently as 2023. This mark of excellence encourages and recognizes hospitals and birthing centers that offer an optimal level of care for infant feeding and mother/baby bonding.

Blue Distinction Center+ for Hip and Knee Replacement:

Recognizes hospitals for their expertise and efficiency in delivering specialty care.

Centers for Medicare and Medicaid (CMS)

- **South County Hospital**
5-Star Overall Rating
- **South County Home Health**
4-Star Rating for Patient Experience

Commission on Cancer Accredited:

Designates hospitals whose performance meets or exceeds nationally recognized measures of quality in cancer care.

Healthgrades

Outstanding Patient Experience and Pulmonary Care Award.

Joint Commission Accredited:

Designates hospitals that meet or exceed standards that promote safe and effective care of the highest quality and value.

- **Total Hip and Knee Replacement**
- **Primary Stroke Center**

Press Ganey:

Reaffirmed 2023 Press Ganey Pinnacle and Guardian of Excellence Awards, placing in the top 5% of hospitals nationally for patient satisfaction for the fifth consecutive year.

- **Guardian of Excellence Award for Human Experience**
- **Pinnacle of Excellence Award for Patient Experience**



ADVANCING HEALTHCARE

FACILITIES UPGRADES AND EXPANSIONS

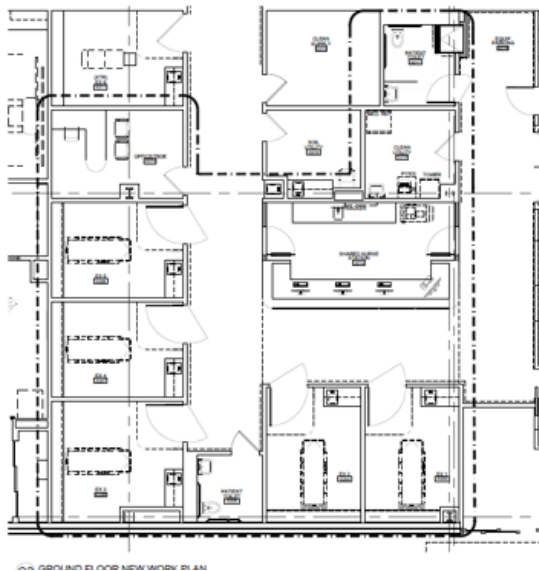
BALISE ENTRANCE

Completed in March 2023, and made possible by a generous donation from the Balise Family, the new Balise Entrance, formerly the West Entrance, offers improved Hospital access to patients and visitors. Inpatient and Outpatient Surgical patients, Diagnostic Imaging, and all Hospital visitors are encouraged to utilize this entrance, where they will be directed to proceed to the Patient Information Desk. Use of this new entrance will improve patient and visitor access as dedicated parking spaces are adjacent to the new entrance.



This modernized and welcoming entrance will be the focal point for patients, staff, and community accessing the hospital for their care. It will also serve as a much-needed outdoor area for respite for patients and families while receiving their care and for the exceptional caregivers that serve our community daily.





ED-B BEHAVIORAL HOLDING UNIT

Fully funded by the Foundation through philanthropy provided by members of the community and our partners in support of South County Health, the ER-B unit of the Emergency Department, re-opened in June 2023 after months of renovations.

Renovations to the ER-B unit include facility response solutions to better accommodate patient holding in the Emergency Department, including but not limited to patients with behavioral health diagnoses who are there for extended periods, through enhancements to the rooms and common areas that intend to promote patient safety and experience

Many of these enhancements were developed and designed in part through input provided by a multidisciplinary team of South County Health stakeholders that included representatives from the Medical Staff, Emergency Department, Nursing, the Community Health Team, and Facilities among others.



LOBBY IMPROVEMENTS - NEW CAFE & GIFT SHOP

In collaboration with our valued food and beverage partner Unidine, we are excited to open a new South County Health Café that is set to open in May 2024.

The new café – called Healing Grounds Café – is located in the main lobby near the Balise Entrance, where the current gift shop is located. The café is welcoming space, offering a selection of breakfast, lunch, and a variety of coffee and beverages. Unidine fully funded this project, demonstrating their commitment to enhancing the overall culinary experience at South County Hospital for our community. We are grateful for their support and look forward to the positive impact this new addition will have on South County Health.

A new South County Health Gift Shop has also been constructed simultaneously with the café and is fully funded by philanthropy and South County Hospital Auxiliary. The South County Hospital Auxiliary has long-supported South County Health and this permanent and upgraded space adjacent to the courtyard and Balise Entrance will better support the Auxiliary's fundraising efforts for many years to come.

Temporarily, we will also be relocating our History wall and donor plaques to storage. However, these important elements will be reintroduced later this year in a new manner. The History wall will be relocated to the surgical hallway and will feature Hospital artifacts, elements of the previous History wall timeline, and new

digital displays. This will allow us to highlight more of the great history and culture that helped shape who South County Health is as an organization today. Additionally, we will be centralizing all donor plaques to an interactive digital monitor that will be located by the entrance in the main lobby as part of a new digital wall recognizing our amazing donors and business partners. We recognize the significance of these displays and are dedicated to preserving and enhancing their legacy at South County Health.

All of these facility upgrades mark significant milestones in our ongoing commitment to providing exceptional care and experiences for all who walk through our doors. These additions not only elevate the aesthetic appeal of our facilities but also enhance the overall experience for our patients, visitors, and staff. We recognize the importance of creating welcoming and comfortable environments, and these enhancements are a testament to our dedication to that endeavor.



FY2023 KEY HOSPITAL STATISTICS

OBSERVATION CASES & DISCHARGES



9,214



BIRTHS (DISCHARGES)



710



SOUTH COUNTY HOME HEALTH VISITS



70,448



ENDOSCOPIES



5,012



PROVIDER OFFICE VISITS



232,202



EXPRESS CARE VISITS



41,553



AVERAGE LENGTH OF PATIENT STAY (DAYS)



3.75



TOTAL SURGERIES



6,640



EMERGENCY ROOM VISITS



27,870



OUTPATIENT VISITS



249,190



PROCEDURAL FIRST AND MILESTONES

DR. MARCHAND'S MAKO MILESTONE

In March, 2023, Dr. Bob Marchand of Ortho Rhode Island reached a global milestone after becoming the first orthopedic surgeon in the world to complete their 9,000th Mako-assisted procedure. As part of Ortho Rhode Island's pioneering joint replacement team, Dr. Marchand is one of the foremost robotic surgeons in the world.

"Thirteen years ago, we brought Mako to South County Health to offer state-of-the-art treatment that puts patients' needs and outcomes at the center of our care," Dr. Marchand said. "It's a privilege to have helped thousands of patients with robotic-assisted procedures, and to grow this technology along with our expert team at Ortho Rhode Island."

Through a partnership with Ortho Rhode Island, and the opening of the Center for Advanced Orthopedic Surgery at South County Hospital, South County Health is a global leader in robotic-assisted surgery. Since pioneering the use of Stryker's Mako SmartRobotics™ surgical technology for hip and knee replacements in 2010, the expert surgeons at Ortho Rhode Island have performed more than 17,000 robotic-assisted hip and knee replacement surgeries at South County Hospital.





DR. BRADY'S DA VINCI MILESTONE

In February, 2023, Dr. Joseph Brady reached a milestone after completing the 1,000th robotic-assisted surgery of his career. A general surgeon at South County Health since 2017, Dr. Brady, achieved this milestone during a routine gall bladder surgery using the assistance of the da Vinci Xi Surgical System.

Specializing in gall bladder and hernia repair surgeries, Dr. Brady performed his first robotic-assisted surgery in 2015 and the first ever at South County Hospital on May 31, 2018, using the da Vinci Xi. Since 2018, 788 robotic-assisted surgeries have been completed by the expert general surgeons on South County Health's medical staff, with 16.3% of all general surgery procedures performed at South County Hospital being robotic-assisted surgeries. In 2022, that number increased to 24.8% of all general surgery procedures, with 50.1% of Dr. Brady's surgeries performed with the assistance of da Vinci Xi.



DR. SARAZEN'S AQUABLATION PROCEDURE

Arnold Sarazen, MD, Chief of Surgery and Urology at South County Health, performed the first Aquablation procedure at South County Hospital on January 20, 2024. This procedure, Aquablation therapy, is the latest in medical technology for men suffering from Benign Prostatic Hyperplasia (BPH), also known as enlarged prostate.

Now available at South County Hospital, Aquablation therapy is an advanced, minimally invasive treatment that allows our surgeons to use the power of water delivered with robotic precision to provide long-lasting BPH relief without compromise and minimal risk of irreversible complications like incontinence, erectile dysfunction, and ejaculatory dysfunction, all with a fast recovery time.

"We are proud to be the first in Southern Rhode Island to offer a solution for men with BPH that provides significant, long-lasting symptom relief, with lower risk to sexual function and continence," said Arnold Sarazen, MD, Chief of Surgery, Chief of Urology, South County Health.



NEW SCMG PROVIDER SPOTLIGHT

SENIOR LEADERSHIP TEAM

Brian Kwetkowski, DO, joined South County Health in 2023 as Medical Director, Primary Care. In Fall of 2023, a new leadership position was created within South County Medical Group and Dr. Kwetkowski was named the inaugural Assistant Vice President of Physician Services in addition to his Medical Director position. As AVP of Physician Services, he provides operational leadership over all of the clinical service lines.



PRIMARY CARE

Julie Carroll, AGNP, is a board-certified Adult-Gerontology Primary Care Nurse Practitioner. Julie attending the Chamberlain College of Nursing and Purdue University. Julie is currently seeing new patients in our Cranston Primary Care office.



Mohammed Kattan, FNP, is a board-certified Family Nurse Practitioner with experience in assisted living facilities, telemetry, and Interventional Radiology. Mohammed holds a Master of Science from Salve Regina University and is currently seeing patients in our Narragansett Primary Care office.



Diane McKeef, APRN, is a board-certified Advanced Practice RN specializing in primary care and internal medicine. Diane studied at New York University. She has been in practice since 1999 and is currently seeing patients in our Narragansett Primary Care office.



Renee Morais, FNP-BC, is a board-certified Family Nurse Practitioner. Renee studied at Elms College and The University of Rhode Island. Renee is trilingual in English, Portuguese Creole, and Spanish, and is currently seeing new patients in our Warwick Primary Care office.



Melissa-Jean Suttmeier, FNP-C, is a board-certified Family Nurse Practitioner. She is a graduate of Rhode Island College and Purdue University Global. Melissa is currently seeing new patients in our East Greenwich Primary Care office.



GENERAL SURGERY

Marissa Cunetta, PA-C, joined the surgical team at South County Health. Marissa is Board Certified by the National Commission on Certification of Physician Assistants and assists our general surgeons during operative procedures and in providing care to patients during their hospital stay.



OBSTETRICS AND GYNECOLOGY

Sarah West Allen, CNM, is a Certified Nurse Midwife. Sarah studied at Oberlin College and Oregon Health Sciences University. She graduated with honors from The University of Massachusetts Medical School in 2015 and has expertise in obstetrics and gynecology.



ONCOLOGY

Matthew Danish, MD, is a board-certified Oncologist. He completed his fellowship at Brown University and residency at Rutgers University. Dr. Danish brings his expertise treating all blood diseases and malignancies to our Cancer Center in Wakefield.



Paul Lvovsky, DO, is a board-certified Radiation Oncologist. He studied at the New York College of Osteopathic Medicine and completed his residency in the Department of Radiation Oncology at the College of Physicians & Surgeons of Columbia University. Dr. Lvovsky has particular expertise in prostate, breast, skin, and lung cancers.



UROLOGY

Katelyn Johnson, MD, is a board-certified Urologist. She completed her residency at Yale University with expertise in robotic surgery and the diagnosis and treatment of unwanted fertility, erectile dysfunction, prostate cancer, kidney cancer, urologic reconstruction, benign prostatic hypertrophy (BPH), kidney stones and overactive bladder.



DAISY AND PETAL AWARDS

The DAISY Foundation was established in 1999 by the family of J. Patrick Barnes. His family was awestruck by the care and compassion his nurses provided and one of the goals they set in creating a Foundation was to recognize extraordinary nurses everywhere who make an enormous difference in the lives of so many people by the super-human work they do every day. Cinnamon rolls were a favorite of Patrick's during his illness. The Barnes Family asks that whenever and wherever nurses smell that wonderful cinnamon aroma, they stop for a moment and think about how special they are. The Petal Award is a program created by South County Health's Nursing Shared Governance group to recognize nursing support staff who go above and beyond their line of duty. Nurses wouldn't be able to perform their jobs without the help of dedicated and talented support staff.

2023 Daisy Award Recipients

- Samantha Chin, RN
- Becca Crofts, RN
- Sarah Abois, RN
- Caroline Peguero, RN
- Corey Cook, RN
- Sarah Kettle, RN
- Bethany Reinhard, RN



Petal Award honorees personify South County Health's commitment to patient experience. These individuals consistently demonstrate excellence through their extraordinary, compassionate care while promoting a restful and healing environment.

Petal Award honorees personify South County Health's commitment to patient experience. These individuals consistently demonstrate excellence through their extraordinary, compassionate care while promoting a restful and healing environment.

2023 Petal Award Recipients

- Laura Gardiner
- Corrine Perrin
- Elisa Lovegrove

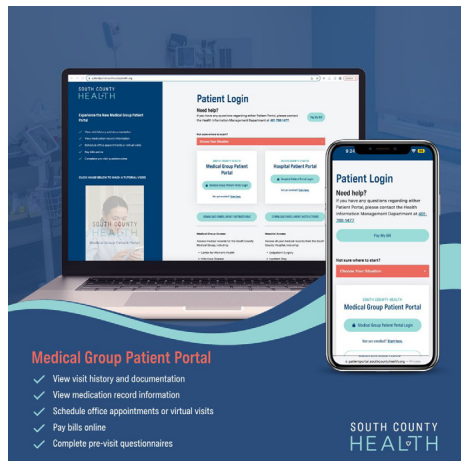


DIGITAL

ENHANCED PATIENT PORTAL

As part of South County Health's digital transformation strategy to improve patient access to healthcare and personal health information, an upgraded electronic medical record (EMR) system used by South County Medical Group practices was launched in March of 2022. The enhanced patient portal used for primary care and specialty practices, offers a new feature allowing current patients to self-schedule upcoming primary care and specialty visits including virtual visits.

In FY2023, over 21,000 patients enrolled in the SCMG Patient Portal with over 1,700 appointments or virtual visits scheduled through the portal.



GET CARE NOW (VIRTUAL)

Providing easy access to patients with non-life-threatening injuries and illness to get same-day care, Get Care Now offers additional features that saves patients time when visiting our Express Care or Emergency Department services. In March of 2022, we introduced the ability for patients to access eVisits and Video Visits with our providers.

SCH NOW APP

The SCH Now App, our digital front door was relaunched in 2023 making it easy for patients to access high-quality healthcare – including our Get Care NOW portal from their smartphones or other personal devices. Available on the App Store and Google Play, over 5,000 individuals downloaded the new SCH Now App in 2023.

- Get Care Now portal
- Test Results
- Locations
- Find A Provider
- Bill Bay
- Careers



DIGITAL STATISTICS

DIGITALLY SCHEDULED APPOINTMENTS

FY23
EXPRESS CARES &
EMERGENCY DEPARTMENT



12,924  136%

FY23
% OF EXPRESS CARE/ED
VISITS DIGITALLY SCHEDULED



18.7%

VIRTUAL VISITS AND APP DOWNLOADS

FY23
eVISITS &
VIDEO VISITS



1,074  159%

PATIENT PORTAL

FY23
MEDICAL GROUP
PATIENT PORTAL ENROLLMENTS



21,376  52.5%

FY23
MEDICAL GROUP
PATIENT PORTAL

SCMG

1,742  373%

FY24 (THRU MARCH)
% OF EXPRESS CARE/ED
VISITS DIGITALLY SCHEDULED



20.59%

FY23
SCH NOW
APP DOWNLOADS

**SCH
NOW**

5,469  124%

FY23
MEDICAL GROUP
PATIENT PORTAL UTILIZATION

SCMG

38.2%





COMMUNITY HEALTHCARE

SERVING OUR SOUTH COUNTY COMMUNITY

SOUTH COUNTY HOME HEALTH

South County Home Health is a leader in the delivery of skilled visiting nurse care, rehabilitation, wound care, and other medical and non-medical services for patients who are recovering at home. As the community grows in demographics and geography, South County Home Health responds to current needs and positions itself to pivot and meet changing needs supporting our community by providing the option of quality care at home.

At South County Health, we are stewards of your health. We want you to maintain or achieve optimal health so together, we can create a healthier, more vibrant community. Our community benefit initiatives and collective health improvement efforts with diverse partner organizations, are one way that we demonstrate our commitment to the health of the South County community.

Last year South County Health developed a three-year Community Health Improvement Plan (CHIP) to guide community benefit and population health improvement activities across South County. The CHIP builds upon previous health improvement activities, while recognizing new health needs identified in the Community Health Needs Assessment (CHNA), a changing healthcare environment, and the impact of the COVID-19 pandemic.

Goals, objectives, and strategies from the three-year CHIP are outlined below. In developing the CHIP, South County Health sought to focus on upstream interventions to address social determinants of health barriers and advance health equity for our communities.

BEHAVIORAL HEALTH

GOAL: Strengthen and support community initiatives that increase awareness of behavioral health, improve access to treatment, and promote wellness, recovery, and resilience.

- Reduce behavioral health stigma and fear of seeking treatment.
- Improve access to high quality behavioral health services and supports along a full continuum of care.
- Reinforce behavioral health as a chronic condition.



CHRONIC DISEASE

GOAL: Achieve equitable life expectancy and quality of life for all people by ensuring all residents have the resources they need to maintain their health.

- Promote healthy living for residents through all stages of life, with a focus on addressing social determinants of health barriers.

PATIENT EXPERIENCE

In FY2023,, South County Home Health achieved its goal of 4 Stars for Patient Experience as measured by Home Health Compare (Medicare.gov).

By continuing to improve upon best practices to enhance the patient experience, our goal is to achieve a 5-Star rating in Patient Experience and Quality metrics.

Focused efforts will:

- Optimize best practices with scheduling around patient preferences.
- Support newly admitted patients with in-home leadership rounding and follow-up on discharge calls to ensure smooth transition back to community support.
- Encourage all Home Health staff to complete Field Staff OASIS-E certifications.

ADDRESSING SOCIAL DETERMINANTS OF HEALTH

South County Health has supported clients with Social Determinants of Health (SDOH), providing financial assistance, education, social and emotional support, among other items. The following is a list of services provided by the South County Home Health community health worker:

- Supplied grocery gift cards and Be Safe bags with cleaning supplies, masks, gloves, sanitizer, hygiene items, paper goods, thermometer, and food items.
- Helped home-bound patients and families to arrange pick-up or delivery services for prescriptions.
- Provided pick-up and delivery services from the local food bank for home-bound patients..
- Provided ongoing social and emotional support to patients and families socially isolated during the pandemic, including regular check-in phone calls.
- Supported vaccination education and clinics.
- Support issues related to housing, evictions, and other moratoriums, including partnership with the Medical Legal Partnership of Boston (MLPB) for legal counsel.
- Offered a borrowing service for iPads and WiFi hotspots to enable patients to connect with friends and family, schedule medical appointments, and/or attend partial day programs.



COMMUNITY HEALTH

The Community Health Division provides stewardship for the community through strategic, collaborative partnerships with other organizations whose mission and vision support the health and well-being of residents within the communities we serve.

HEALTHY BODIES HEALTHY MINDS (HBHM)

Healthy Bodies Healthy Minds (HBHM) provides programs that focus on system-level changes through a convener of community partners with individual community-based support offered through the Community Health Team and other specialized programs.

To ensure inclusivity of all communities within Washington County, South County Health provided administration and staffing for the HBHM program for its role as one of 15 Health Equity Zones (HEZ) in the state. HBHM is funded by the Rhode Island Department of Health, Substance Abuse & Mental Health Services Administration, The Rhode Island Foundation, and Blue Cross Blue Shield of RI.

WASHINGTON COUNTY ZERO SUICIDE PROGRAM (WCZSP)

WCZSP takes a population health approach to suicide prevention by implementing Zero Suicide within the region's eight major healthcare organizations, including South County Health. An important part of this effort is having an adequately trained workforce and universally screening patients for depression and suicidality.

From January 1, 2019 to September 29, 2023 a total of 36 organizations including South County Health trained staff through face-to-face and online Question/Persuade/Refer (QPR) training modalities. Across Washington County, a total of 2,812 health care

workers were QPR trained. South County Health is also one of seven health care organizations in Washington County that conducts universal screening of all emergency department patients ages 25 and up using the Patient Health Questionnaire (PHQ) 2, PHQ 9 and the Columbia Suicide Severity Rating Scale (C-SSRS). A total of 258,107 PHQ and C-SSRS screens were conducted from 2020-2023.

- To date, 1,568 of South County Health's staff have been trained in Question, Persuade, Refer (QPR) suicide prevention training and all new employees go through training as part of their orientation. This accounts for 55.7% of Washington County's total QPR trainings.
- A universal Patient Health Questionnaire (PHQ) was implemented for patients seen in the Emergency Department with South County Hospital screening all ED patients 25 and up. From 2020-2023, a total of 158,802 PHQ and C-SSRS screenings have been conducted to identify patients at risk of suicide. This accounts for 55.7% of Washington County's total PHQ and C-SSRS screenings.



BEHAVIORAL HEALTH IN RI

Washington County is a designated mental health shortage area due to an inadequate number of providers and inpatient beds. The Mental Health Association of Rhode Island recognizes multiple reasons for the current state of the mental health care landscape in Rhode Island. Lack of resources, however, is cited by 67% of providers as a reason for not being able to accommodate new patients into their already full caseloads.

Additionally, the pandemic has had profound and far-reaching effects on Americans' mental health. Depression among adults in the United States tripled in early 2020 — jumping from 8.5% before the pandemic to a staggering 27.8%. Findings indicate this trend is actually worsening, affecting one in every three American adults. Mental health challenges are impacting children too; with the proportion of mental health-related visits for children aged 5 to 11 and aged 12 to 17 increasing to approximately 24% and 31% from 2019 to 2020. Similarly, substance abuse and overdose deaths are also spiking. More Rhode Islanders died of accidental drug overdoses in 2021 than any other year on record according to the Rhode Island Department of Health. Short staffing and lack of available beds has led to long wait times and delayed services.



COMMUNITY APPROACH TO BEHAVIORAL HEALTH CARE

South County Health has been actively working within Washington County on improved care for behavioral health patients for many years, collaborating with local partners, people with lived experiences of behavioral health issues, and state and local officials. While there is a crisis at hand, we are working toward sustainable improvements including investments in:

- Significant environmental upgrades to Emergency Department Behavioral Holding Unit (ED-B)
- Psychiatry services
- Crisis Intervention Training
- Suicide Prevention Training
- Behavioral Health Trained Nurses and Ancillary support
- Care Plans and Clinical Pathways
- Utilization of Newest Medication Regimes
- Community Health Workers
- Peer Support Workers
- Leveraging Patients with Lived Experiences
- Growth in Social Work Services
- Community Care Team
- Paramedicine
- Collaboration with Local and State Partners



RHODE TO EQUITY

One such partnership within Washington County is through Rhode to Equity (R2E), a RIDOH two-year grant with funding under the Washington County Health Equity Zone (HEZ) to support community-based initiatives providing equity and access to care all of which align with the Community Health Needs Assessment initiatives.

The grant allowed SCH to add two full-time community health workers to support patients with multiple emergency room visits and intervene when identifying gaps in Social Determinates of Health (SDOH) such as food insecurity, housing instability, transportation, safety, or financial concerns. The program is in partnership with Thundermist, who also added one full-time community health worker to connect patients to long-term access to behavioral health care in the community with their well-established psychiatric providers and programs.

SCH invested in a behavioral health-friendly unit adjacent to the emergency department, an advanced practice provider position for early initiation of medication management, and earlier access to treatment. All staff are trained in suicide prevention and initiation of de-escalation training. Local EMS provides a Paramedicine Program that can complete home visits for patients as another layer of support post-hospitalization.

SCH and Thundermist launched a Community Care Team in October 2023, convening local municipal and community partners to review community members with the highest need to consider options for wrap-around services stabilizing and improving long-term issues person by person.

GOALS OF R2E

- Reducing avoidable visits to the ED for Behavioral Health reasons
- Reducing total time in the ED for Behavioral Health concerns
- Starting as early as possible - treatment in the ED
- Improving Transitions of Care among patients who visit the ED for Behavioral Health, including connections and follow up through Primary Care and Behavioral Health providers
- Improving overall Patient Experience for Behavioral Health patients

R2E DATA

Overall, goal was achieved of reducing High Utilization patients & visits to the ED:

- 649 interventions for 277 individuals
- For 7 individuals tracked, this meant a total of 44 fewer visits as compared to the prior year.
- R2E supported systemic improvements, including investments in a behavioral health friendly unit, and improved basic needs such as better meal options and more activities.



"I have to start by saying I am a nurse, and I was blown away by Caroline [Caroline Peguero, RN]. At the end of September, my father was in and out of the hospital, and he was found to need a pacemaker. After receiving the pacemaker, he was doing okay. But around the end of October, we found him having difficulty walking and holding items. My mom had a planned surgery for October 23, and while we were there, my dad developed a headache. After some convincing, he agreed to be seen in the ER, and we came across Caroline. My nurse-gut told me something was wrong, and she listened to me and helped in every way she could to get him the assessment he needed. We found out that he had a bilateral brain bleed, and we were shipped off to a bigger hospital. As we were waiting, she came back to check on us, and she held my hand as I took a second to cry. Then, she gave me the confidence to push on and get my dad the help he needed. I will be forever grateful for her."

"The ER nurses and the Borda 1 nurses and support staff were angels. I cannot say enough good things about their skill level, compassion, attentiveness and professionalism. They were equally concerned with my physical and emotional well-being. They protected my dignity, as well as my health. The nursing/support staff are a critical component to the functioning of the hospital. They are the cornerstone that makes it run with competence and compassion. The entire team treated me as they would have treated their mom. Much gratitude and appreciation."

"I'm sure Sarah [Sarah Morrisette, RN] and all the nurses are under stress managing difficult situations. However, without exception, Sarah walked into the room with a smile and positive disposition. Given that my dad saw Sarah more often than the doctors, she became his anchor during his stay. Thank you so, so much for Sarah and the entire staff. You're all guardian angels."

"Thank you to everyone at South County Hospital for a terrific experience yesterday when I had foot surgery. The volunteer at the first desk was very friendly and helpful and he made me feel at home and less nervous. All of the nurses were wonderful, especially Maggie, who made getting an IV port installed as quick and minimally uncomfortable as possible- I have had less pleasant experiences elsewhere; and her help with everything else was great."

A big thank you to Dr. Keller for the anesthesia that did not leave me with any trace of pain in my throat, unlike a previous experience elsewhere. And of course the biggest thank you to Dr. Mechrefe for my foot surgery. I had some pain yesterday but very little today; I am already in the mend."

"We would like to thank all of you for the wonderful care and compassion that we experienced as a family through the journey of having a loved one with cancer. The care Joe received and the joy he had in seeing everyone meant the world to us. While Joe may not have crossed paths with all of you, it is without a doubt, all of you who made his journey through the difficult times of this nasty disease more bearable. He looked forward to seeing all your smiling faces, the friendly banter; and of course, the busting of a few beans. This team is truly special in all the ways that it connects with, and cares for patients and their families. We appreciate all you did to support him and us through his treatments and final days. We are sure he is watching over you to make sure the center has not fallen apart in his absence. They say it takes a village to raise a child; we believe it takes a village to care for the many cancer patients you encounter every day. If there are angels on earth, your team most definitely fits the bill."

"EVERYONE from SCHH were 100% awesome. As the patient everything was explained, and as the caregiver my husband felt they were 100% right on."

"I am very grateful for the care I received from the PT staff. They were professional, compassionate, & friendly, and they were a significant part of my successful recovery. Thank you very much!"



"Diane and Jill from SCHH were wonderful. I was down and they brought me up and helped me tremendously. I am blessed to have had them as my PT team. LOVE THEM."

"Positive experience receiving services from SCHH - Consistent, timely and professional - follow up of care and progress steady."

"Sue, Tammy, Hope & Josh from SCHH were very helpful and instructive. It was a huge support to have their services - I could not have gotten by as well without them."

"My grandfather called me after a nice young lady stayed past her shift to clean him up because he was too afraid to bother anyone to tell them he was a little wet! He said she treated him with care, respect and dignity and kept telling him it was okay and that she would stay as long as he needed her. He was brought to tears and so thankful for this interaction."

"I would love to thank Dr. Colin Ireland in the ED for saving my son. He had gone to another hospital in the state twice for breathing difficulties. He was misdiagnosed both times. The staff at South County Health really listened! Dr. Ireland and his team heard our story and sent my son directly for imaging. I think we only spent about an hour total in the South County Health Emergency Department before being transferred to a more specialized facility in Boston. Thank you Dr. Ireland and your team, and thank you South County Hospital, for the amazing care you gave my son."

"I had my son on 9/14/23. It was a very long labor and I had a difficult time post-birth. Meg [Megan Moran] was there every step of the way helping me through, making sure I'm okay, taking the extra steps to help me clean up and ensure I was comfortable. We were fortunate enough to have Meg both nights and throughout our time with her she checked on us more times than I could count. When I was exhausted and desperately needed a break, she took my son and kept him safe running tests so that I was able to take a nap. Honestly and truly, Meg made our birthing experience above and beyond and I have thought about her often over the past couple of months. I truly think Meg deserves to be honored for her compassion, kindness, skill with her job, and ability to connect with her patients. Thank you so much Meg! We are so, so grateful every day for our experience with you!"



LEADERSHIP, GOVERNANCE, FINANCE

SOUTH COUNTY HEALTH BOARD OF TRUSTEES OFFICERS



Joseph F. Matthews
Chairman



James L. Farrell
Vice Chairman



Noah Benedict, MHL
Secretary



Betty Rambur, Ph.D., R.N.
Secretary



Aaron Robinson
President & CEO, Ex-officio



MEMBERS



Robert Bierwirth, M.D.
*President of the Medical Staff,
Ex-officio*



Christopher Jalbert, M.D.
*Vice President of the Medical Staff,
Ex-officio*



Robert K. Dyer, M.D.



Rogean Makowski



Jason Marshall



Rick Norberg



Austin C. Smith



Victoria Wicks



Barbara Wolfe, PhD, MSN, BSN



SOUTH COUNTY HEALTH SENIOR LEADERSHIP



Aaron Robinson
President and CEO



Anitra L. Galtore, DNP, RN, MS, NEA-BC
*Vice President, Chief Operating Officer,
Chief Nursing Officer*



Thomas Breen
*Vice President,
Chief Financial Officer*



Kevin P. Charpentier, M.D.
*Vice President, South County Medical
Group, Chief Medical Officer*



Angie Mathieu
*Vice President,
Chief Digital Officer*



Ian Clark
*Vice President,
Performance Excellence and Strategy*



SOUTH COUNTY HEALTH SENIOR LEADERSHIP



Maggie Thomas
*Vice President,
Chief Human Resources Officer*



Christine Foisy
*Vice President of Development,
Chief Philanthropy Officer*



Andrew Prescott, Esq.
General Counsel



Lynne Driscoll, RN, BSN, CCM
*Assistant Vice President,
Community Health*



Brian Kwetkowski, DO, MBA
*Assistant Vice President,
Physician Services
Medical Director, Primary Care*



Deb Randall, RN, BSN, CPHRM
*Assistant Vice President,
Quality and Regulatory Compliance*



FINANCIAL SUMMARY FY2023

SOUTH COUNTY
HEALTH



Fully Consolidated Total Operating Revenue
(Less Endowment/Foundation)

\$243,625,221

OPERATING REVENUE

SOUTH COUNTY
HOSPITAL

\$204,763,855

SOUTH COUNTY
HOSPITAL
REVENUE

SCMG

\$24,344,857

SOUTH COUNTY
MEDICAL GROUP
REVENUE

SOUTH COUNTY
HOME HEALTH

\$12,206,401

SOUTH COUNTY
HOME HEALTH
REVENUE



\$2,310,108

OTHER REVENUE
(OV and SCSS)

INVESTMENTS INTO OUR COMMUNITY

SCMG

\$16,369,000

INVESTMENTS IN
COMMUNITY-BASED
PROVIDER OFFICES



\$7,738,000

INVESTMENTS IN
PROVIDER COVERAGE



\$136,833

FINANCIAL ASSISTANCE AND
OTHER COMMUNITY
BENEFITS AT COST



SOUTH COUNTY HEALTH FOUNDATION



Through donor support in FY2023
South County Health raised

\$7,800,000

CHARITABLE GIVING AND SUPPORT

FY2023 saw opportunities to again gather for some fundraising events including:

- May 18 - Breast Health Ladies Event - A ladies night out at Coast Guard House raised **\$17,500** for the Breast Health Center.
- May 24 - A panel discussion at Newport Tennis Hall of Fame moderated by Dr. Kevin Charpentier with panelists: Dr. Michael Mason and Dr. Akshay Yadhati from Ortho Rhode Island, General Surgeon Theodore Delmonico, MD; South County Radiation Therapy Medical Director, Daniel Fass, MD; Urologist Arnold A. Sarazen, MD, FACS, Chief of Surgery and OB/GYN - Mohamad Hamdi, MD.
- June 14 - Invitational Golf Event – golfers enjoyed a beautiful day at Misquamicut Club while raising over **\$80,000** to support South County Health.
- June 21 – Auxiliary Fashion Show at the Dunes Club – This popular event saw a full capacity crowd enjoying a wonderful lunch and fashion show, and raising over **\$30,000** for the Auxiliary.



Charitable gifts from our community helped to support:

- ED-B Behavioral Health Holding Unit
- Glidescope
- Hercules Patient Positioning System
- Balise Entrance
- UroCuff Pro System
- Care packages for patients in the Cancer Center
- Transportation Assistance
- Housing Assistance



CIRCLE OF CARE

With 164 members of the Circle of Care, we raised over **\$597,100** for the Annual Fund to be used where needed most. This generosity enables us to remain innovative in our ability to provide the best patient care possible and increase organizational capacity to care for every person who walks through our doors.

BUSINESS PARTNERS

We have engaged 13 community-based businesses in support of South County Health's mission. Now in its sixth year, the Business Partner program provides an opportunity for local businesses to demonstrate their support for the health and wellness of those in their communities. See a full listing on page 42.

PLANNED GIVING AND BEQUESTS

Over **\$1,189,597** realized from charitable bequests and planned gifts.



GRANT SPOTLIGHT

In addition to the generous contributions from individuals and businesses, we received support from 12 grant funders in FY 2023. These foundations collectively donated **\$491,345**, enabling us to enhance the quality of care we provide. We are deeply grateful for their support and are proud to highlight three foundations whose commitment has been particularly impactful.

Three Angels Fund - \$40,000 plus a \$10,000 matching grant during our employee campaign for the Cancer Center and Breast Health Center.

Champlin Foundation Grant - \$196,500 grant awarded for telemetry system enhancements, advancing cardiac care capabilities.

- **\$250,000** grant in FY24 for new beds on Borda, Intensive Care and Telemetry Units

Rhode Island Foundation - \$75,000 grant to support hiring an Advanced Practice Registered Nurse to provide care to patients in our Emergency Department Behavioral Health Holding Unit.



SOUTH COUNTY HEALTH DONORS

We are grateful for your support.

CIRCLE OF CARE DONATIONS TO THE ANNUAL FUND

BENEFACTOR

Gifts of \$25,000 and above

Anonymous

Balise Auto

Albert Chester Beals, Jr. Charitable Trust

Robert K. Dyer, MD and Gail A. Dyer, Esq.

Hope and Jim Farrell

Joseph F. Matthews and Family

Murray Family Charitable Foundation

Lelia D. Palmieri

The Vivian J. Palmieri Trust

Ken and Dorothy Woodcock

1919 SOCIETY

Gifts of \$10,000-\$24,999

Marie Christine Foundation

Grimshaw-Gudewicz Charitable Foundation

Hazard Family Foundation

Roberts Health Centre/Richard A. Catallozzi

CHAIRMAN'S CLUB

Gifts of \$5,000-\$9,999

Chip Bolster

Carol and Ed Cimilluca

Christina and Duncan Cocroft

Lodowick Collins and Marjorie Jackson

Judy and John Comito, MD

Gordon C. Johnson

John Marshall Family Foundation

Sara and Jason Marshall

Donna Lindemann McBurney

*Ann M. McDermott, RN**

Betty Rambur and Don DeHayes

Gail and Douglas Ricci

Kelly and Aaron Robinson

Peggy and Henry Sharpe Fund

James R. Swallow

The H. Winfield and

Phyllis A. Tucker Family Foundation

Lesley and Michael Vickers, II

TRUSTEE'S CLUB

Gifts of \$2,500-\$4,999

Alliance Healthcare Services

Edward A. Allsop

Russell and Marjorie Boss

Joanne M. Daly and Guy Millick

Judy and Robert DiClemente

Yolanda and Bruce Gardner

Thomas and Jane Holt

Ruth and Jeffrey Jarrett, PhD

Eve and Thomas Keenan, MD

Peter F. Kohlsaat, Sr.

Linda B. Matthews

Candace B. McNally

*Arthur H. Post, Jr. **

Janice Rabinowitz

Jane and W. Bruce Rollins

Siravo Family/

JDL Family Limited Partnership

Jane W. Skogley

Donna and Jack Vanderbeck

PRESIDENT'S CLUB

Gifts of \$1,000-\$2,499

A Quick Tire Service of Wakefield

Allegis Group Foundation

Dawn and Ted Almond

Marilyn Almond

Patty and Melvin G. Alperin Fund

Clarice D. Anderes

Arrowhead Dental Associates

Claudia Belden

Susan and James Blackerby

Anne E. Bowen

Thomas J. Breen

Susan and David Brown

Barbara and Stephen Bucci

Paul C. Carlson

Cheryl and James Carlsten, MD

Maggie and Paul Cashion

Kevin Charpentier, MD and Alicia Kilduff

Liz and David Chase

Natasha and Christopher Chihlas, MD

Lou Chrostowski and Doug Shapiro

Judith and Joseph Cianciolo

Ian T. Clark

Betsy and Thomas Coghlin, MD

Diana Cohen

Sandra and Domenic Coletta

Ann F. Conner

Martha Conrad

Sandy and Ron Denelle

Rodney Dernavich and

Pat Williams-Dernavich

Kim and Bradford Dimeo

Lynne A. Driscoll

Angela Durfee

Wendy and James Ernst

Angela and Roger Fazio, MD

Ellie C. Ferguson

Bob Fetzer and Rosanne Zimmerman

Christine M. Foisy

Michael M. Ford



Anitra L. Galtore, DNP
 Joan and George Gardiner
 Sandra Gardner
 Lou Giancola and Pam High, MD
 Jane and Ronald Gilchrist
 Lauren Goldenberg
 Susan and Francis Golet
 Lawrence and
 Muriel Graham Charitable Fund
 Alicia and Peter Graves, MD
 Rosanne and Robert Griffin
 Sandra and Vincent Grybauskas
 Scot V. Hallberg
 John J. Haxton
 Tim Haxton
 Sue and Stephen Heard
 Robert B. Hertling, Jr.
 Carole and Richard Higginbotham
 Mathilda M. Hills
 Kathleen and George Kelleher
 Charles P. Kelley
 Mary and Richard Kenny
 Camilla W. Lee
 Cornelia and Charles Lewis
 Susan Seyfarth Lovejoy
 Dennis F. Lynch
 John J. Mahoney
 Rogean and John Makowski
 Paul V. Martin
 Angie and Gary Mathieu
 Judith Matteson

Edward and Sharon Mazze
 Eileen and Kenneth McWilliams
 Catherine and Curtis Miller
 Martha O. Milot
 Karna L. Misevic
 Peggy and Mark Noble
 Rick Norberg
 William Ohley, PhD. and Margaret Buheit
 Marianne and Joseph J. O'Neill, MD
 Miriam G. and M. Robert O'Neill
 Joseph Orlando and Diane Fournaris
 Janice and Robert Panoff
 Pancha and Carl Peterson
 Lorraine and Kirk Pickell
 Andrew Prescott and Maura Goodwin
 The Rabinowitz Foundation, Inc.
 Johanna and Richard Rakauskas
 Nancy Read
 Lucy and John Reardon
 Betty Sue and Roberts Reed
 Claudia and Gerald Reynolds
 Jan and Henry Rines
 Bojana Ristich and John Burkett
 Linda and Hays Rockwell
 Ferna and John Rourke
 Robin and David Ryan
 SeaMist MedSpa
 Julie and Henry Sharpe, III
 Cathy and Russell Shippee
 Carmel and Jeffrey Silverstein, MD
 Mary Christina Simpson, MD and

Greg Simpson
 Mary and Sherwood Small
 Susan and Austin Smith
 Patricia and Paul St. Onge
 Claire and William Sweenor
 William H. Taft, IV
 Maggie Thomas
 Carroll and John Tickner
 John Uricchio
 Bob and Jane Viera Charitable Trust
 Amy and Justin Walsh
 Carol and Robert Weissman
 Deborah and Barry Wepman
 The Winter Family Foundation
 Walter Young and Sylvia Blanda

ANNUAL DONORS

Unrestricted giving up to \$999

Nancy Abeshaus and Barbara Kaskosz
 John P. Acheson
 Judith W. Adams
 Meredith H. Allison
 Beverly L. Almeida
 Suzan M. Amoruso
 Anonymous
 Cynthia T. Archambault
 Charles M. Armstrong
 Janice D. Arsenaault
 Karen and Ira Asher, MD
 Dorothy H. Baker
 BAMB Bay Area Mobile Medical

BankRI
 Linda and Donald Barrows
 Kevin Barske
 Albert Chester Beals, Jr. Charitable Trust
 Linda G. Beaulieu
 Beaver River Golf Club
 Patricia and Daniel Bell
 The Frances &
 Benjamin Benenson Foundation Inc.
 Emilie Benoit
 Ruth and Kurt Bergantini
 Michael Bischak
 Sheri Borrelli
 Richard D. Breault
 Elizabeth and Edward Brodeur
 Ann and Robert Brogan
 Beverly and Thomas H. Brown
 Rhonda Brunero
 Keith Bruns
 Lynn Brusby
 Sally Burke
 Louis Califano
 Virginia and Peter Carr
 Mary Anne and James Carr
 H.Carr & Sons
 Edward Carter
 Patricia Casey
 Marianne Casey
 Sandra Cavanagh
 Joseph Celeberto
 Mary and Jaime Chamorro, MD



William Chapin
Marc A. Chartier
James J. Cimino
Beverly and Louis B. Clark
Meryl and David Clark
Joseph Clark
Linda and Arthur Clarke, III
Julie and John Coduri
Russell Cohen
Eliza G.C. Collins
Charles Connery
Constance Connery Smayda
Niovi and Spiros Constantinides
Construction and
General Laborers' Local Union 271
Albert Conti
Aurora and Douglas Costanza
Sharon and John Courtois
Brendan Coyne
Steven Crandall
Wendy Crandall and Chris D'Aguanno
Elizabeth and John Crosby
Patricia Crowley
Daniel Crowley
Gary Cruickshank
Geraldine and David Cunningham
Charlotte and Harold Curry
Carolyn and Richard Curtis
Judith D'Agostino
Gail and Gary Dalton
Joseph D'Amico

Debra and Orville Davis
James Degnen
Anne F. Delsanto-Ravenscroft
Lenore A. DeLucia
Paula and Greg Demetrakas
Mark DerManouelian
Patricia and Rodney Dernavich
Richard DeSista
Kathleen and David DiMeo
Charles Donilon, III
Kelly Donovan and Deborah Karel
J. Michael Downey
Kelly Duffy
Leona Duffy
Diane and Richard Durand
Wayne Durfee
Marcia and James Dyne
Barbara Dzitko
Paula Eagan
Margaretta Edwards
Janice Eldred
Edward Famiglietti
Diane Fasching
Pamela Faulkner
Ann Ferrante
Maryann Ferraro
Kenneth G. Figgins
Gloria and Francis Figueroa, MD
Constance Fitzelle
Kathleen and Joseph Fitzgerald, MD
Jean and John Fitzpatrick

Priscilla and Martin Flynn
Agnes and Leo Fox
Barbara Fracassa
Phoebe Ann Freeman
Jean Gallo
Martha Gargle
Tammy and John Gathen
Ansje Gershkoff
Sarah and Vasant Gideon
Paul Gilgun
Judith and Richard Goldenberg, DMD
Marian Goldsmith
Alexander Gonsalves
Barbara and John Gordon
Elizabeth Gordon
Bruce Guoin, DMD and Christine Benoit, DMD
Mary and Walter Gray
Janet Murchie Gray
Ellen and Lawrence Grebstein, PhD
Christine and Richard Greene
Lumina Greenway
Nancy and John Greim, Jr.
Rosemary and John Gribbin
Monica Gross, MD, MPH
Sybil Guthrie
Audrey Hallberg
Nancy and Russell Hays
Louise Heard
Kristen Henderson
Robert Henrikson
Bliss Hoffman

Joan and Walter Hudson
Eleanor and John Huston
Elizabeth and Martin Hyman
Elizabeth and Honorable Gilbert Indeglia
Wendy and John Jackman
Diana Norton Jackson and
Leland Jackson, MD
Barbara Jerrett
Kenneth Johnson
Margaret and Mark Johnson, MD
Vivian Johnson
JP Morgan Chase & Co
Carol and Charles Kaufman
Jessie and Brett Kenyon
Susan Kermes
Frances Kieke
Sylvia and Gerald Krausse
Irene Laliberte
Michael Lapointe
Katharine Larsen
James Laudone
Joan Lausier, PhD
Beverly Lavallee
John Law
Lesley and Mark Lederer
Dorothy and Edgar Leduc
Joanne and Benjamin Lenda
Ann Lessmann
Michelle and Christopher Little
Amy Lloyd
Del Ayer Long



Sandra and Robert Lovejoy
Martha Lucia
Kathleen and Albert Lucini
George Lynch, Jr.
Ann Mac Donald
Bea and Bruce MacGregor
Kathryn and John Mahoney
Genevieve Maigarie
Lita and Leo Mainelli
Anthony Maione and Dori Gerhardt
Christine Marchese
Judith and Richard Margarian
Sara and Jason Marshall, Esq.
John Marshall Family Foundation
Marianna Marsocci
Robert Marvel, Jr.
Constance Marzilli
David Mazzucchelli
James McCauley
Maureen and Robert McGowin
Frances and Kevin McGrath
Patricia and Robert McGreen
Carol McMahon
Elizabeth McNab
Carol McPhee
McQuades Marketplace
Matthew Medeiros
Rozanne and Matthew Melchiori
Michael Merner
John and Emily Miller
Joanne Daly and Guy Millick

Kathryn and Joseph Miltimore
Patricia Mion
Adrian Mitchell
Brenda and David Mitchell
Kenneth Moffat
Mary Ellen Moffitt
Thomas Montagne
Hon. Patricia Moore and Guy Geffroy, MD
Sharon Morgan
Susan and Domenic Mosca, Jr., Esq.
James Murdocco, MD and
Rev. Sandra Haines-Murdocco
Fae and Ira Murphy, Jr.
Janet and Ronald Neschis, MD
Jocasta and Matt Neuschatz
Marjorie and Richard Newton, Jr.
Kay and Carl Nowiszewski
Mafalda and Robert Nula
Diane and Thomas O'Brien
Jane O'Brien
Mary Ann and Donald Packer
Mary and William Palm, III
Arthur Palmer
Regina and John Partridge
Victoria Partyka
Lois Pazienza
Sharon Pena
Stephen Penza
Robert Petro
Kevin Piti
Michael Plessner

Marcia and Stanley Polhemus, Jr.
Mary Poupart
Michelle Proulx and Charles Connell
Kristen and Mark Provost
Margaret Puhlick
Betty-Lou Quigley
Sandra and Joseph Quinn, Jr.
Vivian and James Quinn
Marie and Evandro Radoccia, Jr.
Jackie and C. David Ralston, III
Mickey and Ran Ranalli
Gail and Luca J. Razza
Patricia and Ret. Col. John Reardon
John Reeder
Sandra and Alex Reilly
Religious of Jesus and Mary Inc.
Rhode Island Building Trades
Marie Ricci
Saul Richman
Mary Lou Riley
Jeanne Riley
Jan and Henry Rines
Edith Roberts
Susan and Mark Robinson
Barbara and Frank Robinson, III
Deborah and Paul Roche
Karen and Donald Roebuck
Sharon and Eric Rose
Jonathan Rose
Muriel Rose
Sandra and William Rosen

Elaine and James Rosmond
John Ruscito
Patricia Russo-Magno, MD
Eileen Sadasiv
Susan and Arnold Sarazen, MDs
Lisa and Victor Sardelli
Madonna and Alfred Saulino
Jerome Schaffran
Katharine Schelleng
Kit and Mark Schlosky
Gilbert Scott, Jr.
Louise and William Scott
Mary Seigny
Susan Shanley-Szala
Loretta and Richard Shaw
Donna Shields
Patricia Silva
Frances and William Sinkler
Virginia and Nelson Smith
Judith and Gary Smith
Daisy and James Smythe, MD
Doreen Snow
Karen Soderberg-Gomez and Jorge Gomez
Norma Staley
Jane Stedman
Anthony Steere, Jr.
Karen Stein
Karen and Jeffrey Stein
Maureen and James Stifel
Samuel Stillo
Josiah Strandberg



Kristine and Everett Stuart
 Mary Anne Sumner
 M. Beverly Swan, Ph.D.
 Regina Sweet-Holland and Robert Holland
 Gail and Robert Taber
 William Taft, IV
 Lynda and Benjamin Tallman
 Geoffrey Tapper
 Jan and Hon. Ernest C. Torres
 Jacquelyn Tracy
 Marie M. Trivelli
 Marta Trujillo-Bencomo
 Scott Tsagarakis
 Karen and Robert Tucker
 Kerry Tyson
 Jacquelyn Vehmeyer
 Jean Vican
 Joanne and Joe Viele
 Wakefield Mall Associates
 Ginger Waldron
 Joseph Walsh, Esq.
 Ann and Richard Watelet
 Marcia Waterman
 Sharon Webster
 Marilyn and David Webster
 RADM Richard West, USN Ret.
 Sandra White
 Carol Wilson
 Susan and Michael Winter
 Catherine and Ben Wohlberg
 Winifred and Ralph Woodmansee

Deanna Wright
 Patricia and Robert Yarnall, Jr.
 Janet and Alan Yozura
 David Zartarian
 Dorothy and Mark Zullo, MD
 Joan G. Wood
 Deanna D. Wright
 Patricia and Robert Yarnall, Jr.
 David G. Zartarian
 Terry and Anthony Zoglio
 Dorothy and Mark Zullo, MD

2023 DONOR DIRECTED GIVING

BREAST HEALTH CENTER

The Ahlborg and Greim Families
 Anonymous
 Balisle Auto
 Susan R. Bowers
 Thomas J. Breen
 Virginia Brewer
 Barbara and Stephen Bucci
 Christine Cabral
 Shannon and Stephen Champagne
 Kevin Charpentier, MD and Alicia Kilduff
 Lou Chrostowski and Doug Shapiro
 Ed and Carol Cimilluca
 Ian T. Clark
 Sandra and Domenic Coletta
 Maureen and Bud Cummings

Joanne M. Daly and Guy Millick
 Davitt Design Build, Inc.
 Lynne and Daniel Driscoll
 Robert K. Dyer, MD and Gail A. Dyer, Esq.
 Hope and Jim Farrell
 Christine M. Foisy
 David Fontes
 Anitra L. Galmore, DNP
 Robert G. Gianfrocco, DO
 Lauren Goldenberg
 Grimshaw-Gudewicz Charitable Foundation
 Tory and Derek Groves
 Scot V. Hallberg
 Hazard Family Foundation
 Carol and John Howland
 Thomas Hoy
 Gordon C. Johnson
 Mary and Richard Kenny
 Philip Lawell
 Marie and Ronald Lee
 Charles Litwin
 The Loebs Family Foundation
 Rogean Makowski
 Marie Christine Foundation
 John Marshall Family Foundation
 Sara and Jason Marshall
 Jennifer and Valerie Martin
 Angie and Gary Mathieu
 Joseph F. Matthews and Family
 Karna L. Misevic
 Matthew Moeller

Murray Family Charitable Foundation
 n/e/m/d architects, Inc.
 John A. O'Hare
 OMNI Technology Services
 Lelia D. Palmieri
 The Vivian J. Palmieri Trust
 Janice and Roblert Panoff
 Picerne Family Charitable Foundation
 Andrew Prescott and Maura Goodwin
 Betty Rambur and Don DeHayes
 Deb and Jared Randall
 Mary Regan and Andrew Bulk
 Kelly and Aaron Robinson
 Jane and W. Bruce Rollins
 Bianca and Andrew Ross
 Lois M. Sastic, MD and Jonathan Sastic, MD
 Susan and Austin Smith
 South County Hospital Auxiliary
 Lise Strickler and Mark Gallogly
 Robert and Patricia Thavenius
 The Three Angels Fund
 Maggie Thomas
 Elizabeth Tolmie
 Deborah and Barry Wepman
 Westerly Community Credit Union
 Victoria and Bruce Wicks
 Barbara Wolfe
 Ken and Dorothy Woodcock



CARDIAC REHAB

*Mary B. Cooper**

COMMUNITY CANCER CENTER

Chip Bolster

Sandra K. Cavanagh

Family Charitable Fund

Karen and James Grace

Gordon C. Johnson

Mary and Arthur Kaufman

EMERGENCY DEPARTMENT

Christine and Kevin Hunt

GRANTS

The Champlin Foundation

The Horace A. Kimball and

S. Ella Kimball Foundation

Ida Ballou Littlefield Memorial Trust

Navigant Credit Union

Ocean State Charities Trust

The Rhode Island Foundation

Fred M. Roddy Foundation

Edward J. & Virginia M. Routhier Foundation

The Three Angels Fund

ICU

Beverly Barron

Susan and Steven Barron

Mary and Michael Hagen

CHARITABLE TRUSTS

Emilie Luiza Borda Charitable Fund

Clark-Lyon Fund

T. DeCoppett Residuary Trust

James A. & Elizabeth K. Fletcher Fund

E. H. Fobes Charitable Trust

John T. & Nellie T. Gardner Trust

A.G. Hazard Beneficent Fund

Dr. J. Paul Jones, Carolyn M. Jones and

Virginia L. Jones

Marian S. & Frederic T. McAuslan Endowment Fund

The Midvale Foundation

Arthur M. Potter Trust

The Estate of Thomas Scott Rogers

Daniel Sherman Trust

E. Thompson Trust Louis F. Bell Fund

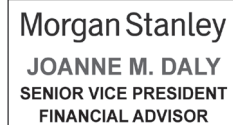
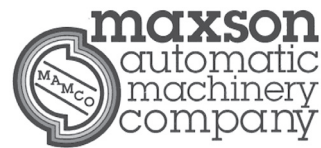
Attmore A. Tucker Memorial Fund

Howard A. & Lillian M. Walsh Trust



Special thanks to our
BUSINESS PARTNERS

\$50,000 AND ABOVE



\$15,000



\$9,000



SOUTH COUNTY HEALTH

100 Kenyon Avenue, Wakefield, Rhode Island

For the digital version of this annual report, visit annualreport.southcountyhealth.org



www.southcountyhealth.org

All photography for this annual report was taken following proper CDC guidelines.