



SCH **Pulse**

FOUNDATION

BY THE NUMBERS

\$1.1 Million
grant from Warren Alpert Foundation
to support Nursing staff recruitment
and professional growth

70%
of hospital beds replaced through
a \$250,000 grant from
The Champlin Foundation

\$40,000
raised at the Auxiliary's annual
Fashion Show in June

\$130,000
raised through the annual
Invitational Golf Tournament
at Misquamicut Club in June

17
scholarships awarded
to local students this spring

20,500
volunteer hours donated in 2023

STAY CONNECTED

**SOUTH COUNTY
HEALTH**
FOUNDATION

Christine M. Foisy
VP of Development
Chief Philanthropy Officer
401-788-1608
cfoisy@southcountyhealth.org

To receive future updates, please email
foundation@southcountyhealth.org



August 2024 | southcountyhealth.org



Welcome to the latest edition of *Pulse*, where we celebrate the heart of South County Health — our community and the philanthropic spirit that fuels our mission. As we navigate change, it is your generosity and support that continues to be the cornerstone of our success, enabling us to achieve remarkable advancements in healthcare.

A recent significant advancement we've achieved, thanks to a generous grant from The Champlin Foundation, is the replacement of 70% of our hospital's beds. This monumental upgrade not only enhances patient comfort but also improves our ability to deliver the highest standard of care. Each new bed represents a commitment to the well-being of our patients, ensuring they receive the best possible experience during their stay with us.

I am also excited to announce that South County Health has been awarded a **prestigious grant from the Warren Alpert Foundation in the amount of \$1.1 million**, the largest grant ever received by South County Health. This particular grant funding is specifically restricted for uses that help recruit and retain some of our most challenging RN vacancies here at South County Hospital while supporting and enhancing our RN staff's professional development. We are confident this grant represents a significant step towards providing us a competitive edge in recruiting and retaining nursing staff, boosting job satisfaction, and fostering the growth of future nurse leaders while enhancing our patient care quality.

We are also proud to announce the recent openings of our new **Healing Grounds Cafe and Gift Shop**. These spaces are fast becoming integral parts of South County Hospital, offering patients, families, and staff a place of respite and comfort. The Healing Grounds Cafe provides nutritious and delicious options that promote wellness, while the Gift Shop offers thoughtful items to support our patients and visitors. These additions are more than amenities — they are reflections of our dedication to creating a holistic healing environment, and they are fully funded through partnerships and philanthropy.

Looking ahead, we continue working towards bringing a comprehensive **Breast Health Center** to Washington County. The center will focus on early detection, advanced treatment options, and supportive care throughout the breast health journey. This philanthropy-funded project is close to its fundraising goal, but we need your support to make it a reality. Together, we can make a difference in our community's healthcare. We are also excited to welcome Dr. Julia Tassinari, our new Breast Surgeon, through a partnership with Brown Surgical Associates, who will be a key part of our breast health program.

As we celebrate these advancements, we extend our heartfelt gratitude to all our donors. Your contributions are not just investments in South County Health; they are investments in the health and future of our entire community. Together, we can build a healthier, brighter future for everyone in our community.

With deepest appreciation,

Anitra Galmore, DNP, MS, NEA-BC,
Chief Operating Officer, Chief Nursing Officer



PHILANTHROPY IN ACTION



SCH receives \$1.1M grant

South County Health has been awarded a prestigious \$1.1 million grant from the Warren Alpert Foundation. This is the largest grant received in South County Health's history. The funding is specifically restricted for recruiting and retaining some of the most challenging RN vacancies at South County Hospital, and supporting and enhancing nursing staff professional development.

"Receiving this grant is a transformative moment for Nursing Services at SCH. This funding will not only help us attract and retain top nursing talent, but in parallel invest in the professional growth and development of our current staff," says Anitra Galmore, DNP, MS, NEA-BC, Chief Operating Officer, Chief Nursing Officer. 🍏

Learn more about these grants and their impact on your community at southcountyhealth.org/news



\$250K grant funds new beds

South County Health was recently awarded a \$250,000 grant from The Champlin Foundation. As part of South County Health's commitment to quality and innovation, these funds were used to replace 70% of our hospital beds with Smart Beds designed to deliver superior pressure redistribution for optimal wound prevention and healing.

"We're thrilled to be able to partner with The Champlin Foundation on this important project. With this grant, we are able to take another step in our ongoing journey to meet the changing healthcare needs of our community," says Christine Foisy, Chief Philanthropy Officer. 🍏



BUSINESS PARTNER SPOTLIGHT

South County Health is thrilled to welcome **Bentley Companies** as our newest Leadership Society Business Partner!



Bentley Companies is committed to developing solutions and executing construction services with a personalized, collaborative approach.

As a Business Partner, Bentley Companies is part of a legacy of business leaders committed to supporting our mission to be RI's Most Trusted Health Partner.

Learn more about our Business Partner Program at southcountyhealth.org/businesspartner

GRAND OPENINGS!



The Healing Grounds Cafe and new permanent Gift Shop are now open in the South County Hospital lobby! Funded through partnerships and philanthropy, these spaces offer patients, families, and staff a place of respite and comfort.

The Gift Shop, managed by the Auxiliary, is open Monday-Saturday, with all profits going back to support South County Health. 🍏

Learn more about facility improvement projects at upgrades.southcountyhealth.org



WELCOME OUR NEWEST PROVIDERS & STAFF



Donald Joyce, MD

South County Health Radiation Therapy welcomes Dr. Donald Joyce. Board certified in Radiation Oncology and Internal Medicine, Dr. Joyce is committed to providing exceptional care and advancing the field of oncology through his expertise and dedication.

p. 401-284-0850



Abdullah Kadan, MD

Dr. Kadan recently joined South County Health as a hospitalist in the ICU. With extensive expertise in internal medicine and pulmonary care, he brings a wealth of knowledge and experience to our team.



Julia S. Tassinari, MD

Dr. Tassinari is a board-certified general surgeon with an expertise in breast surgery. She's joined South County Health's Cancer Center as a dedicated breast surgeon through a partnership with Brown Surgical Associates.

p. 401-783-6670



Lania Rodgers, RN

If you are diagnosed with breast cancer, Breast Health Navigator Lania Rodgers, RN, will be at your side every step of the way – coordinating your care and helping you navigate the entire process.

p. 401-788-1676

Looking for a Physician or Advance Practice Provider? Meet our providers at southcountyhealth.org/providers



AWARDS & MILESTONES

3D-Printed Joint Replacement

A FIRST FOR SOUTH COUNTY HOSPITAL

South County Health, in partnership with Ortho Rhode Island, is proud to announce a groundbreaking surgical procedure that represents a significant advancement in orthopedic care. Nathan Howlett, DO, and his team from Ortho RI successfully performed South County Hospital's first reconstruction of a patient's entire shoulder socket, known as the glenoid, using the Vault Reconstruction System (VRS), a revolutionary technique involving 3D-printed materials customized to align with each patient's unique anatomy.

Marking a pivotal moment in the treatment of complex shoulder conditions, the VRS allows for the creation of patient-specific implants designed to treat individuals with significant bone loss in the shoulder, for whom traditional shoulder replacement techniques are not a viable option. This customized approach not only ensures a more precise fit but also minimizes disruption to the patient's life, enabling quicker recovery and improved outcomes.



Nathan Howlett, DO
Ortho Rhode Island



**NATIONALLY RECOGNIZED 'A' RATING
BY LEAPFROG FOR
HOSPITAL SAFETY GRADE**

Rated 'A' for Hospital Safety

South County Health's efforts to provide high-quality care and ensure patient safety were recognized with an "A" rating from Leapfrog Hospital Safety Grade for the Spring of 2024. This national distinction celebrates South County Hospital's achievements in protecting patients from preventable harm and error in the hospital.



SCH STORY

Meet Linda

At South County Health, we know that patient experiences provide invaluable insights into the care we provide and the impact it has on people's lives. We are honored to share Linda's story.



QUALITY CARE BEGINS WITH AN ACCURATE DIAGNOSIS.

The Outpatient Diagnostic Imaging Center at South County Hospital is your Southern Rhode Island resource for the latest advances in medical imaging delivered in a private, comfortable setting.

Our highly-trained staff of board-certified radiologists, technologists, and sonographers are committed to providing you with compassionate, personalized care. Our imaging department has the latest diagnostic imaging equipment, to give the best possible results.

Appointments available six days a week, with early morning and evening openings to accommodate your busy schedule.

Call today to schedule
an appointment
401-788-1486

4 CONVENIENT LOCATIONS!

Hours vary by service.

SOUTH COUNTY HOSPITAL

100 Kenyon Avenue, Wakefield
*X-ray, Ultrasound, Mammography,
Bone Density, MRI, CT, Low-Dose CT,
Nuclear Medicine*

MEDICAL & WELLNESS CENTERS

EAST GREENWICH

3461 S. County Trail, Suite 101 & 203
*X-ray, Ultrasound, Mammography,
Bone Density*

WARWICK

120 Centerville Road
X-ray, Ultrasound

WESTERLY

268 Post Road (Rt 1), Suite 104
X-ray, Ultrasound, Mammography

"Hearing you have breast cancer is initially gut wrenching for most patients. Having the expertise and support of South County Health was extremely comforting for a newly diagnosed patient. From the initial awareness while getting my ultrasound, then the biopsy, and ultimately the lumpectomy, which will be followed with a short stint of radiation, the communication has been exemplary." — Linda

DISCOVERY & DIAGNOSIS

"After my annual mammogram at South County Health in November, I received a letter stating that my mammogram was normal. Attached to the letter was information that the state of RI has enacted a Breast Density Law that requires mammography centers to notify women categorized as having dense breast tissue about their condition. The letter stated that my mammogram indicated that I have dense breast tissue and may benefit from supplementary screening tests, which may include a breast ultrasound screening, or a breast MRI, or both, depending on my individual risk factors. I sent a request for an ultrasound order to my primary care physician."

TREATMENT JOURNEY

"My South County Health ultrasound technologist was Sarah Prentiss. Sarah said that she wanted to show the pictures to the radiologist to check on what she saw. The

radiologist wanted me to have a mammogram of that breast to determine if the "very small spot" of which there was evidence on the ultrasound could be seen on the mammogram.

Sarah has a very gentle, compassionate demeanor that provided me with a sense of comfort. Her professional, warm personality gave me the assurance I was in a good place. After the mammogram, the radiology department sat with me and explained that it would be beneficial for me to have a biopsy of this area. This was when I realized I could have breast cancer.

They introduced me to the breast health navigator, Lania Rodgers, RN, dedicated to providing support, education, and guidance to patients diagnosed with breast cancer. She assured me she would be there to help guide and educate me through the process of the treatment plan as it progressed." ♥

Continue reading Linda's story at southcountyhealth.org/news

Early Detection Saves Lives

Call today to schedule your annual mammogram: **401-788-1486**

Have you heard about Aquablation therapy?

A NEW MINIMALLY INVASIVE TREATMENT FOR MEN WITH BPH, ALSO KNOWN AS AN ENLARGED PROSTATE



Since introducing Aquablation therapy in January 2024, more than 65 local men have already undergone or are scheduled for this innovative procedure at South County Hospital. This effort demonstrates our commitment to bringing world-class healthcare to our community and providing access to new treatment options.

This May, Dr. Philippe Cote underwent Aquablation therapy performed by Arnold Sarazen, MD, at South County Hospital.

“From the moment that I entered your facility to the minute that I walked out the front door the next day, I was treated with kindness, respect, and warmth,” he shares, and goes on to say “Kudos to you all for a well-run, efficient venue that obviously still values the patient. I’m a retired Orthopedic Surgeon and have worked in several different settings along the way, including the military, VA system, as a Resident, and as part of a large health system. I’ve also been a patient at various institutions, and can attest that my overall experience at South County Hospital was first rate.” 🍷

The Aquabeam Robotic System was brought to South County Hospital through philanthropy.

Community support is needed to cover the remaining expense of this life-changing device.

To give in support of Aquablation therapy at South County Hospital, please visit call 401-788-1492 or visit **SouthCountyHealth.org/give**



HELP BRING A COMPREHENSIVE BREAST HEALTH CENTER TO WASHINGTON COUNTY

DID YOU KNOW? Washington County has the highest rate of breast cancer in Rhode Island. Finding breast cancer early and having access to state-of-the-art treatments is shown to prevent deaths from breast cancer.

As stewards of our community’s health, South County Health is committed to developing a comprehensive Breast Health Center that will bring expanded access, best-of-class physicians, and state-of-the-art technology to diagnose and treat breast cancer in South County.

This Breast Health Center will be a gathering place for our multidisciplinary medical teams to discuss every facet of breast diagnosis and treatment. The center will offer advanced diagnostic, surgical, and medical treatment options for breast cancer.

One immediate benefit will be expanding access to allow more people to receive screenings with our state-of-the-art 3D-mammography, a technology that allows the radiologist to view breast tissue one layer at a time. 🍷

JOIN US IN THIS CRITICAL EFFORT TO ENHANCE BREAST HEALTH SERVICES IN WASHINGTON COUNTY.

Donate today and your contribution will ensure that our patients receive the best care possible in a comfortable and supportive environment.

Naming opportunities available.

Contact Christine Foisy for details.
401-788-1608 • foundation@southcountyhealth.org

Learn more at
SouthCountyHealth.org/BreastHealthCenter

Receive news and updates by email!

Subscribe to our monthly eNewsletter

SouthCountyHealth.org/Subscribe

Get Care
NOW!



Get in Line for Lab Visits!

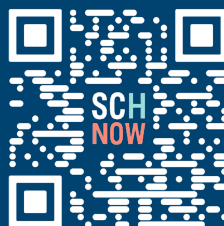
Compare wait times for lab locations
and Get In Line before you leave home.

Now available at outpatient labs in
East Greenwich • Narragansett
Wakefield • Warwick • Westerly

GetCare.SouthCountyHealth.org

**ACCESS HIGH-QUALITY
HEALTHCARE FROM THE
PALM OF YOUR HAND.**

Download our SCH **NOW app today!**



SCAN TO DOWNLOAD
AND LEARN MORE

